



Trimble GuidEx

MACHINE GUIDANCE SYSTEM

THE FUTURE IN STREAMLINED MACHINE GUIDANCE

The Trimble® GuidEx Machine Guidance System is an advanced machine navigation solution intended to quickly and efficiently guide virtually any machine along route corridors or to point/pad targets, while providing local awareness using exclusion and inclusion zones. Built to meet the needs of resource exploration activities, this system improves productivity and awareness with easy, efficient, task-specific navigation.

Trimble GuidEx provides crossline navigation along predefined routes via an integrated light bar, including visual and audible alarms when operators breach user-defined distances from a centerline. Trimble GuidEx also provides point/pad navigation information with intuitive navigational arrows, supported by a wide variety of data recording settings.

For ultimate flexibility and mobility, install and quickly calibrate the Trimble GuidEx system on anything from utility terrain vehicles (UTVs) to heavy equipment, on or off road.



Rugged 10-inch (25.4 cm)
Trimble TD520 Display

Colorful graphics, user-friendly
and intuitive interface

Easily install and calibrate
proven Trimble components



Key Benefits

A Complete Solution Designed for Operational Efficiency

Trimble GuidEx provides streamlined design stakeout navigation to eliminate pre-survey stakeout operations.

- ▶ Navigate to an exact point without stakes or surveyors
- ▶ Corridor navigation allows users to efficiently complete a range of tasks, such as clearing paths for access routes

Fully Connected and On Track

Compatible with nearly any machine type, Trimble GuidEx connects equipment to the office to keep everyone up-to-date.

- ▶ Send updated mapping data (SHP, DEM, CSV and XML files) to machines to avoid rework, via USB or over the air from the office
- ▶ Comprehensive data logging sent to the office for daily activity tracking
- ▶ More efficiently track pad statuses as they are constructed
- ▶ Track machines by time or user-defined event triggers for an accurate representation of the time and cost of a project
- ▶ Pad navigation and user-customized task tracking allows for more accurate contractor payout

Improve Awareness and Minimize Error

Without stakes or surveyors, set exclusion and inclusion zones to make sure work is done exactly where it should be—and nowhere else.

- ▶ Avoid sensitive and/or protected areas, and dangerous hazards
- ▶ Decrease time and money wasted on unnecessary land-clearing
- ▶ Stay within a specified corridor or area without guesswork

Trimble GuidEx MACHINE GUIDANCE SYSTEM



KEY FEATURES

Flexibility for the Way You Work

Trimble GuidEx software supports a variety of functions and file types:

- ▶ Aerial imagery in a wide variety of formats
- ▶ ESRI shape files—can be configured for use as either exclusion or inclusion zones
- ▶ Digital elevation models to provide a clear picture of surroundings
- ▶ CSV files for design point targets
- ▶ Warnings can be set for machine pitch and roll threshold breaches
- ▶ Proximity and zone breach alarms are displayed on screen and recorded to the log database for reference
- ▶ Option for single or dual antenna solution

Comprehensive Data Logging

All Trimble GuidEx products provide comprehensive local machine data logging, including a range of data such as:

- ▶ Position (local and WGS84)
- ▶ Time (UTC and local)
- ▶ Speed, heading, pitch, roll
- ▶ GNSS quality
- ▶ Exclusion/inclusion zone status

System Components

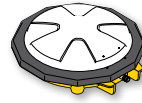
- ▶ Rugged 10-inch (25.4 cm) Trimble TD520 Display touchscreen Android tablet
- ▶ Trimble BX992 GNSS Receiver with advanced 336 channel GNSS
 - Supports CenterPoint® RTX correction services
 - Integrated Inertial Navigation System (INS) to compute precise heading, pitch and roll, and virtual reference point
- ▶ Configurations for NMEA output, Pulse Per Second (PPS) and trigger event support
- ▶ Optional SNM modem for cell / Wi-Fi® activities and SNR on-machine UHF radio for RTK operations



TD520 Display



BX992 GNSS Receiver



Zephyr 3 Rugged Antenna



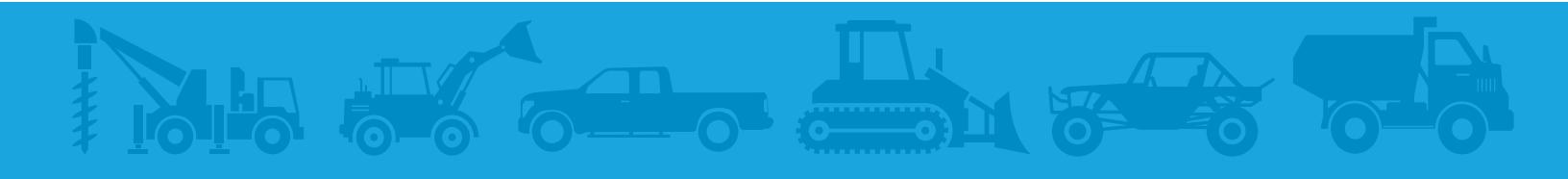
SNM941 Connected Site Gateway*



SNR On-Machine Radio*

*Optional

Install the Trimble GuidEx system on these machine types and more:



TRIMBLE CIVIL CONSTRUCTION
 10368 Westmoor Drive
 Westminster CO 80021 USA
 800-361-1249 (Toll Free)
 +1-937-245-5154 Phone
 construction_news@trimble.com