



Trimble WorksOS

GET REAL-TIME VISIBILITY OF SITE PROGRESS VS. PLAN

Trimble WorksOS is a cloud-based operating system that delivers 3D productivity and real-time progress to plan for site supervisors and project managers to maximize jobsite efficiency.



Shared data from WorksOS ensures all project contributors have the latest information to empower their decisions and become more productive.

Benefits

Productivity Dashboard

- ▶ View the progress to plan for each project in a single dashboard.

Jobsite Visibility

- ▶ Get real-time cut, fill, volume, and compaction data for increased visibility of machine and job site productivity.
- ▶ View progressive volumes of earth moved over time to understand and analyze site productivity trends.

Geospatial Design Driven

- ▶ Drive your machine activity from a central site design for real-time progress versus plan updates from the field.

3D Productivity Monitoring

- ▶ Automate field data collection for accurate, real-time information of the work done with respect to the site design.



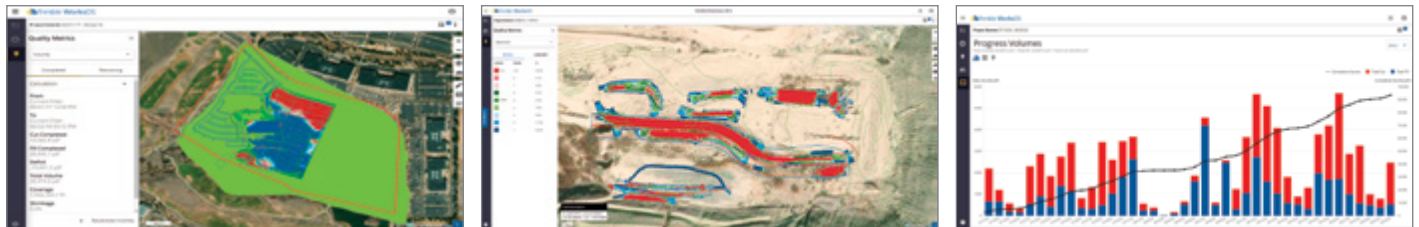
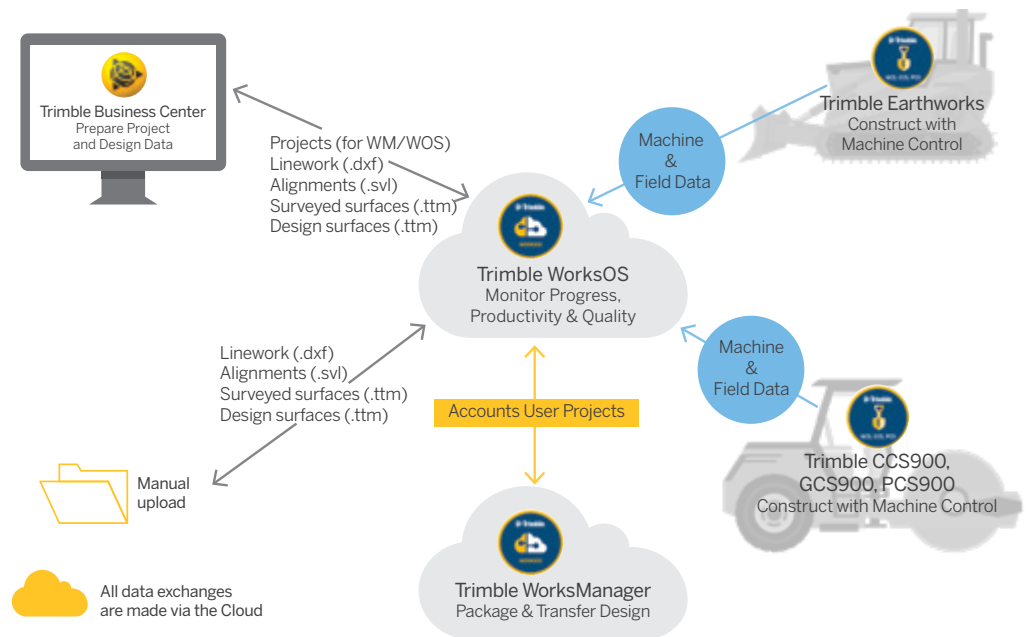
Trimble WorksOS

GET REAL-TIME VISIBILITY OF SITE PROGRESS VS. PLAN

KEY FEATURES

Connected Construction

- ▶ Integrated designs from Trimble Business Center
- ▶ Integration with Trimble WorksManager for project, design and asset management
- ▶ Machine productivity data from Trimble Earthworks, CCS900, GCS900, and PCS900



3D Productivity Monitoring

- ▶ Real-time cut, fill, volume, and compaction data
- ▶ Daily volume and compaction quality metrics
- ▶ Adjust daily work targets to stay on schedule
- ▶ Visibility into which machine is working
- ▶ 2D cut/fill maps for material movement
- ▶ Pass count maps for compaction
- ▶ Filtering capabilities based on machines, geofences, and lifts
- ▶ Progressive volume charts to show cumulative total over time

Geospatial Design Driven

- ▶ Volume and compaction progression relative to a central site design
- ▶ Activity setup to define the start/end, quantity and design targets
- ▶ Upload capability for surveyed surfaces and designs
- ▶ Real-time progress from machine as-built, topographical survey and drone survey input

TRIMBLE
10368 Westmoor Drive
Westminster CO 80021 USA

constructionsoftware.trimble.com